

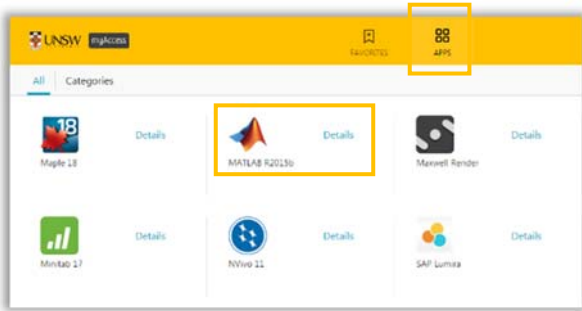


1. Open Matlab for the first time

After logging into myAccess, applications will be available to you to add to your Citrix Receiver from the Apps button.

TIP: This guide refers **two distinct "H: Drives"**. The **Cloud H: Drive** refers to the disk drive starting with your **z number** that is located on the cloud server. The **Local Disk :H"** refers to the local disk drive on your own computer containing your local files.

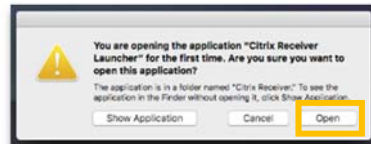
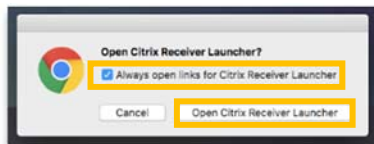
- ▶ Click on **Apps** and select **Matlab R2015b** to open the application.



TIP: When launching your applications through Chrome, you may receive a one-off request to **Open URL Citrix Receiver**. Click **Always Open** followed by **Open URL: Citrix Receiver**.

You may also receive a one-off request to download and save a **.ica** file. Ensure to click on the small down arrow next to the **.ica** file and select **Always Open Files of This Type**.

Note: The following image is what Google Chrome will display, other browsers could vary in the message displayed.

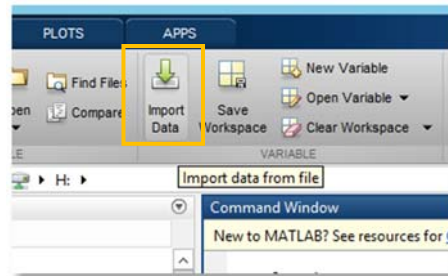


2. Import data into your Matlab project file

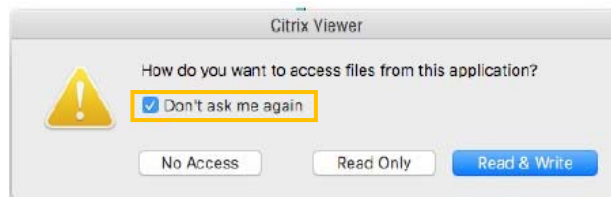
The following steps assume that you have saved your data to the **Cloud H:drive**, if you have saved elsewhere you will need to follow the same steps but look for the drive where your files are saved.

TIP: Depending on the size of the data, opening from your local device could take some time (e.g. up to 20 minutes if the file was 100MB) It is highly recommended that you load up your larger datasets on to your **Cloud H: drive** while on campus. Refer to the [Download files from Moodle guide](#) to learn how to do this.

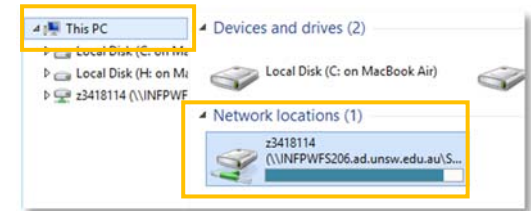
- ▶ Click on **Import Data** located in the top panel, under the **Home** tab.



TIP: You may be asked to let Citrix access the Local Drives. Ensure you click on **Don't ask me again** and click on **Read and Write**.

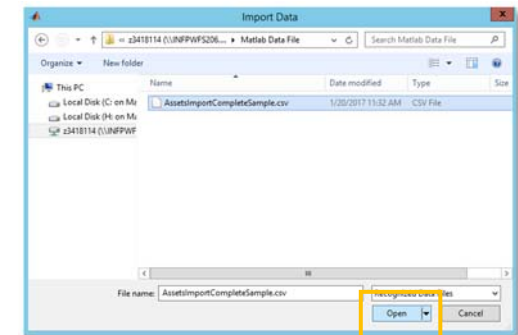


- ▶ On the **Import Data** page, Click on **This PC** and then click on the **Cloud H:drive** (this is the drive that starts with your zID) on the bottom of the window and click **Open**

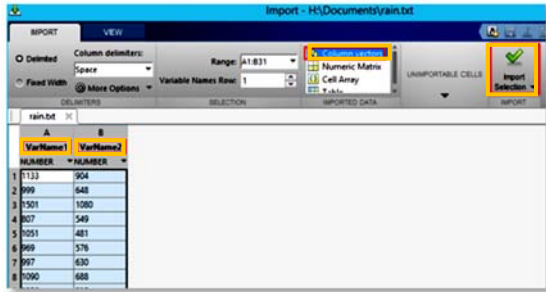


TIP: If you can't find the Cloud H: Drive call the IT Service Centre on (02) 9385 1333

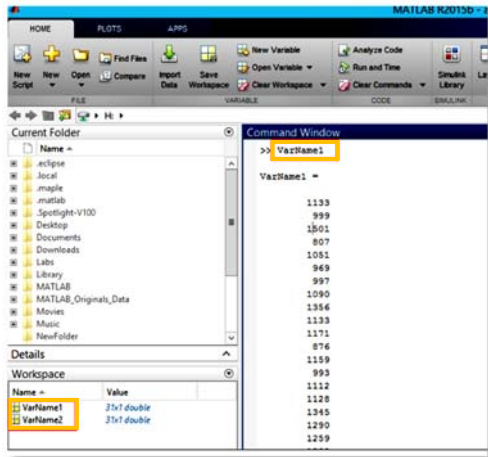
- ▶ Locate your dataset or file and click **Open**



- ▶ Select the highlighted columns as per the screenshot below, these columns are the dataset. In this case you would select **VarName1** and **VarName 2**. Click **Import Selection** to import your dataset.

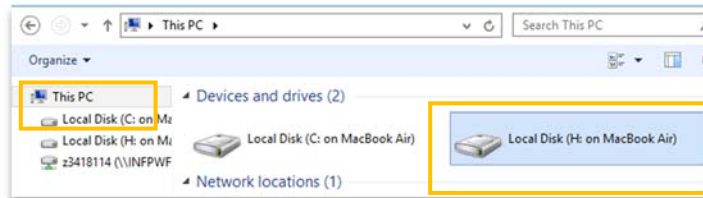


- You have successfully saved your data. The **Workspace** block displays the imported data sets.



3. Manually locating your data file

- On the **Import Data** page, Click on **This PC** and then click on the **Local Disk H:drive** on the bottom of the window and click **Open**



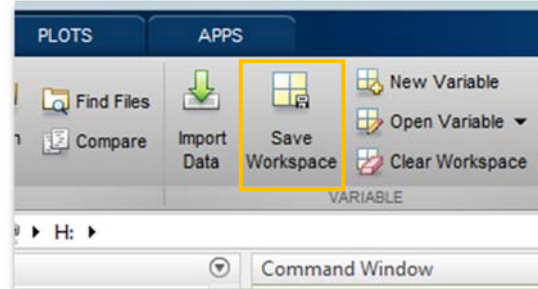
- Locate your dataset or file and click **Open**

*TIP: Sometimes your **Local Disk H:** may not automatically be recognised. You may have to manually locate it. On the **Open** window click on **Local Disk C:**, then the **Users** folder, and select the folder with your account name. You will now see your local file folders.*

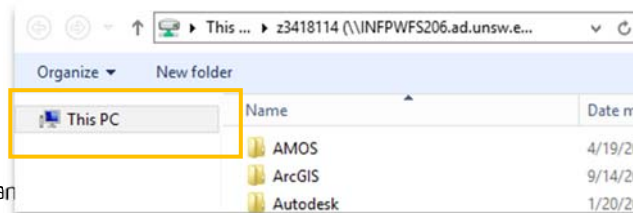
Locate the dataset or file where your data is located in, click **Open**

4. Saving Matlab Files

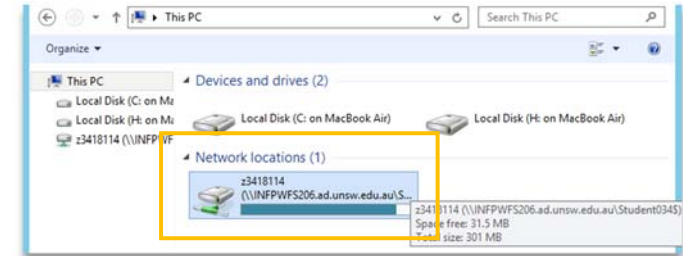
- On the Matlab Menu click on **Save Workspace**



- On the Save As window click on **This PC** on the left

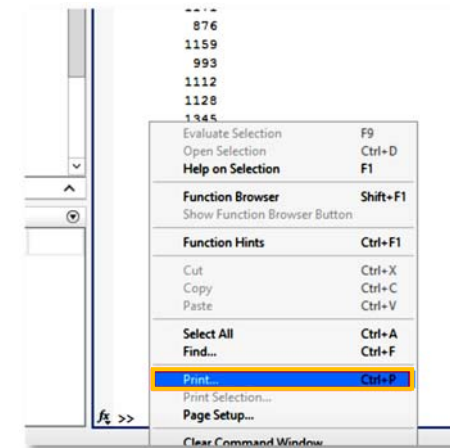


- Under **Network Locations** please double click on the **Cloud :H Drive** starting with your Zid number and save your file inside this drive.



5. Printing from Matlab

- From the **Main Command Window**, right-click and select **Print**





▶ Select the printer you wish to use to print your work and click **OK**

