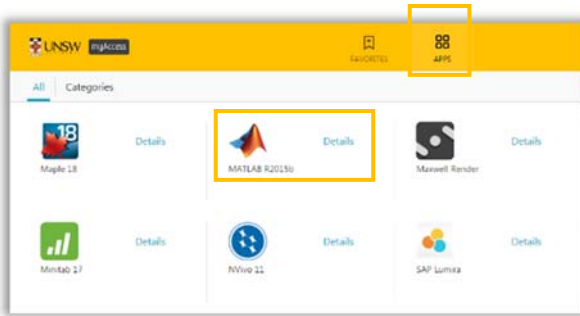




## 1. Open Matlab for the first time

After logging into myAccess, applications will be available to you to add to your Citrix Receiver from the Apps button.

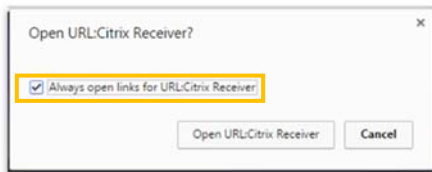
- ▶ Click on **Apps** and select **Matlab R2015b** to open the application.



**TIP:** When launching your applications through Chrome, you may receive a one-off request to **Open URL Citrix Receiver**. Click **Always Open** followed by **Open URL: Citrix Receiver**.

You may also receive a one-off request to download and save a .ica file. Ensure to click on the small down arrow next to the .ica file and select **Always Open Files of This Type**.

Note: The following image is what Google Chrome will display, other browsers could vary in the message displayed.

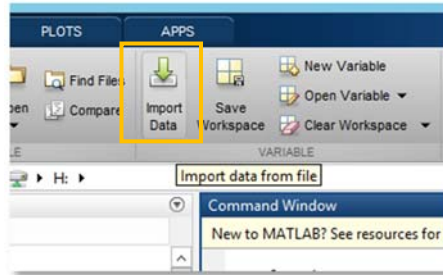


## 2. Import data into your Matlab project file

The following steps assume that you have saved your data to the **Cloud H:drive**, if you have saved elsewhere you will need to follow the same steps but look for the drive where your files are saved.

**TIP:** Depending on the size of the data, opening from your local device could take some time (e.g. up to 20 minutes if the file was 100MB) It is highly recommended that you load up your larger datasets on to your **Cloud H: drive** while on campus. Refer to the [Download files from Moodle guide](#) to learn how to do this.

- ▶ Click on **Import Data** located in the top panel, under the **Home** tab.

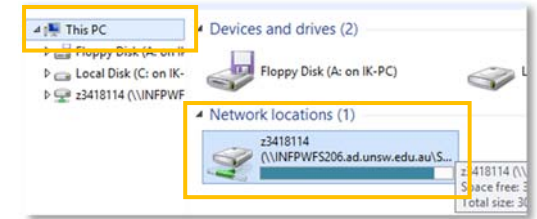


**TIP:** You may be get a **Citrix Receiver – Security Warning**, click on **Permit All Access**.

Please note that the Security Warning window could slightly vary depending on which version of windows you have installed.

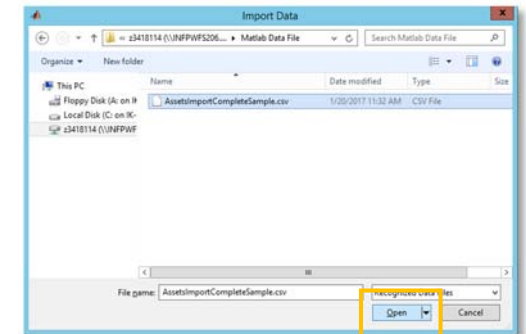


- ▶ On the **Import Data** page, Click on **This PC** and then click on the **Cloud H:drive** (this is the drive that starts with your zID) on the left hand side of the window and click **Open**

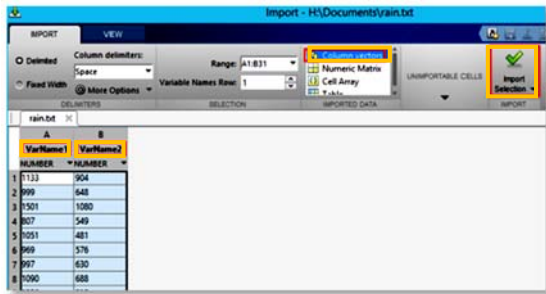


**TIP:** If you can't find the Cloud H: Drive call the IT Service Centre on (02) 9385 1333

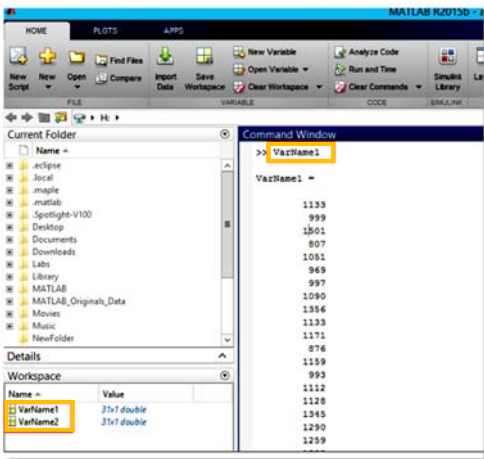
- ▶ Locate your dataset or file and click **Open**



- ▶ Select the highlighted columns as per the screenshot below, these columns are the dataset. In this case you would select **VarName1** and **VarName 2**. Click **Import Selection** to import your dataset.

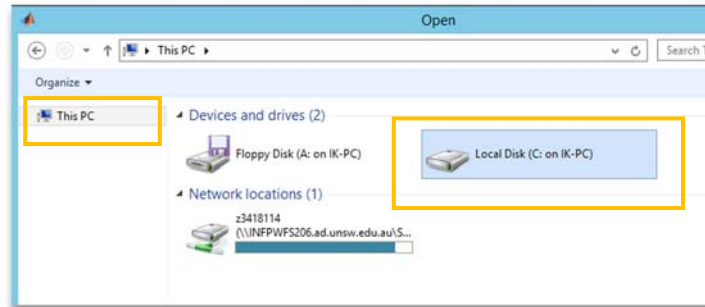


- ▶ You have successfully saved your data. The **Workspace** block displays the imported data sets.



### 3. Importing data from your Local C: Drive

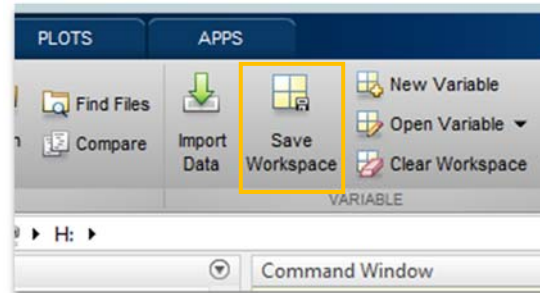
- ▶ On the **Import Data** page, Click on **This PC** and then click on the **Local Disk C:drive** on the left hand side of the window and click **Open**



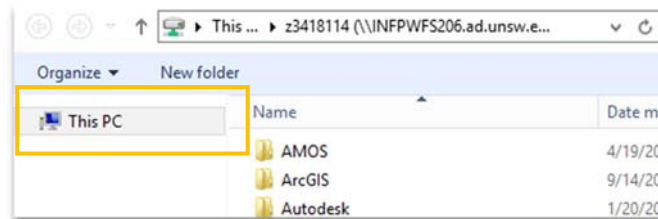
- ▶ Locate your dataset or file and click **Open**

### 4. Saving Matlab Files

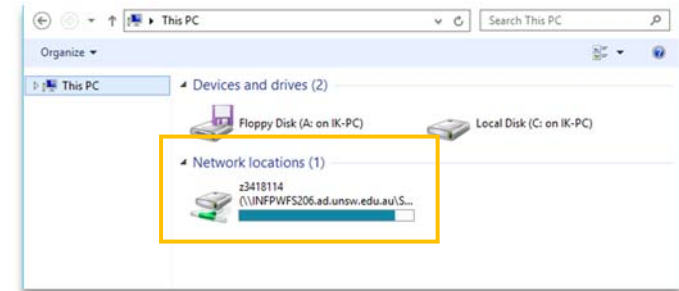
- ▶ On the Matlab Menu click on **Save Workspace**



- ▶ On the Save As window click on **This PC** on the left

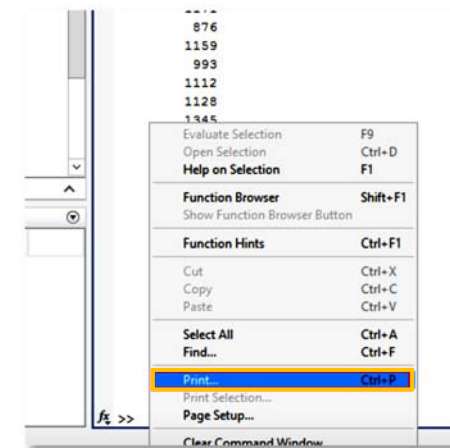


- ▶ Under **Network Locations** please double click on the **Cloud :H Drive** starting with your Zid number and save your file inside this drive.



### 5. Printing from Matlab

- ▶ From the **Main Command Window**, right-click and select **Print**



- ▶ Select the printer you wish to use to print your work and click **OK**

