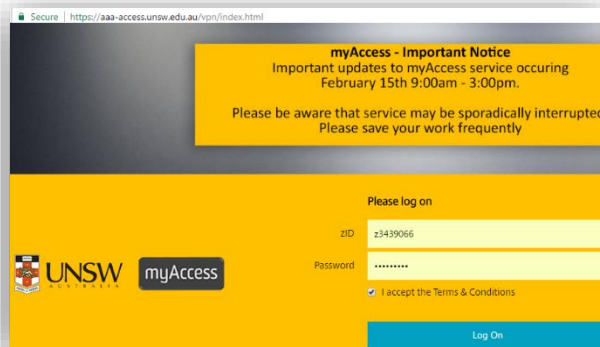


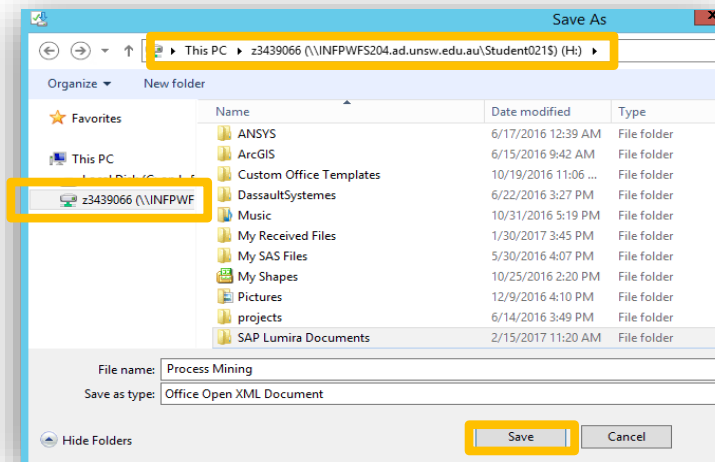
Downloading Datasets from Moodle through the MyAccess Website

Should you need to access a file/dataset stored in Moodle whilst using a myAccess application, first download it to your H: Drive using the myAccess Moodle Application.

- ▶ Login to the MyAccess website (aaa-access.unsw.edu.au) using your zID and password
- ▶ Once logged in, click on the IE icon to access Moodle



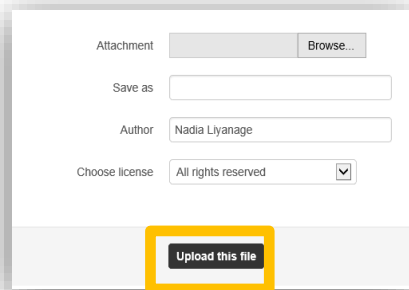
- ▶ You may have to log into Moodle using your ZID and password
- ▶ Find your relevant datasets on Moodle & download them
- ▶ Remember to always download and save your datasets to your H: drive as shown below



- ▶ Once saved in your H: drive you can always access these datasets when logged in to MyAccess.

Note: Moodle will open in Internet Explorer when using Citrix Receiver. This is no cause for concern if you are using a different browser.

- ▶ Logon to Moodle, navigate to Turnitin and click on Upload a File to select your work that has been saved on your H: Drive



Attachment Browse...

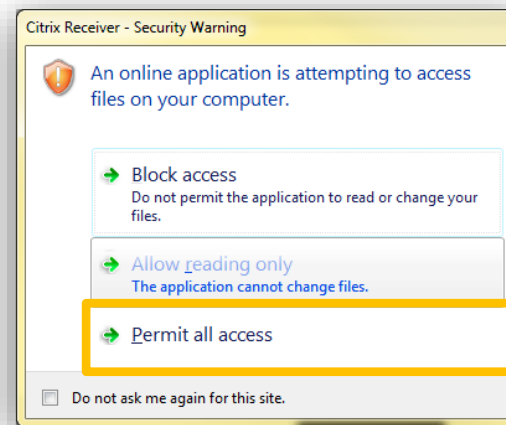
Save as

Author

Choose license

Upload this file

- ▶ Choose your files to upload to Turnitin and from your H: drive & click Open
- ▶ Choose **Permit all access** when the following security message is generated



- ▶ Once selected, click on **Add Submission**

