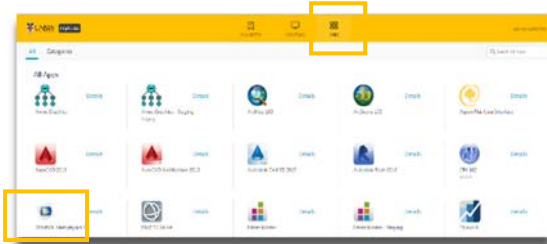




## 1. Open COMSOL Multiphysics for the first time

After logging into myAccess, applications will be available to you to add to your Citrix Receiver from the Apps button.

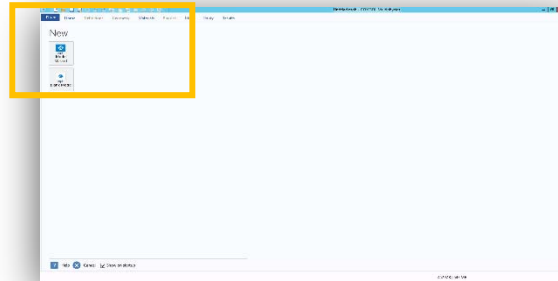
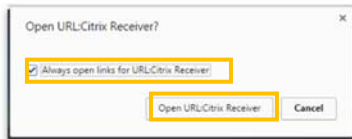
- ▶ Click on **Apps** and select **COMSOL Multiphysics** to open the application.



**TIP:** When launching your applications through Chrome, you may receive a one-off request to **Open URL Citrix Receiver**. Click **Always Open** followed by **Open URL: Citrix Receiver**.

You may also receive a one-off request to download and save a **.ica** file. Ensure to click on the small down arrow next to the **.ica** file and select **Always Open Files of This Type**.

Note: The following image is what Google Chrome will display, other browsers could vary in the message displayed.



- ▶ You have successfully opened **COMSOL Multiphysics**. click on **Cancel** to start importing your data

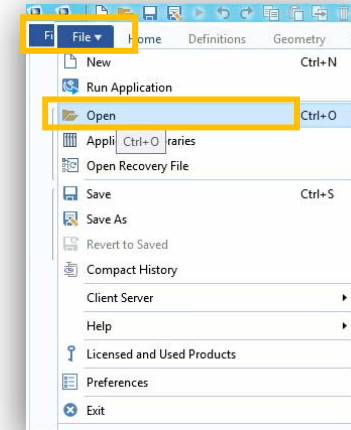
## 2. Import data into your COMSOL project file

The following steps assume that you will save your data to the **Cloud H:drive**, if you have saved elsewhere you will need to follow the same steps but look for the drive where your files are saved – see section 3.

**TIP:** Larger file sizes will take up more time to load the data set (possibly 20 minutes to open a 100MB file). It is highly recommended that when loading larger datasets you save the dataset onto **'Cloud H: Drive'** while on campus – this is the drive that starts with your zID.

Refer to [Downloading files from Moodle](#) guide for more information.

- ▶ Click on **File** and navigate to **Open**



**TIP:** You may be get a **Citrix Receiver – Security Warning**, click on **Permit All Access**.

Please note that the Security Warning window could slightly vary depending on which version of windows you have installed.

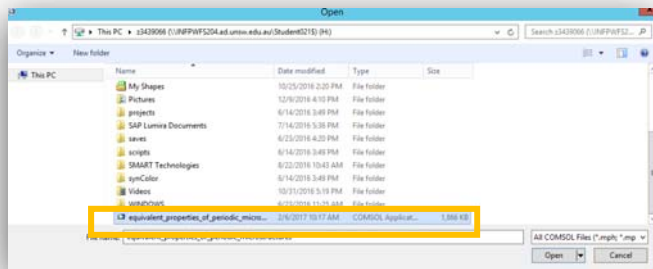


- ▶ On the **Open Data** page, select your data files from your **Cloud H:drive**.



**TIP:** Remember to always save downloaded files straight to your **Cloud H:drive**

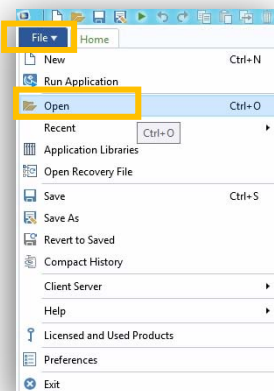
- Once you find your data files in the **Cloud H:drive** simply double click on them OR click **Open** and COMSOL will open your data files.



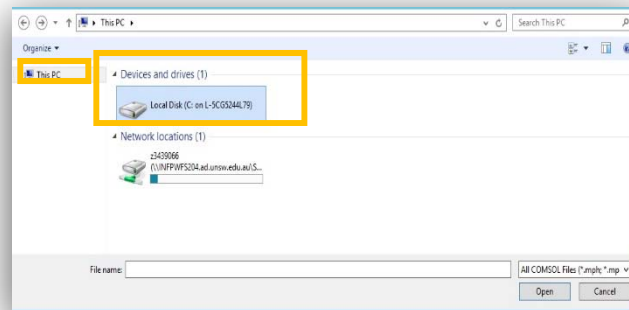
**TIP:** If you can't find the Cloud H: Drive call the IT Service Centre on (02) 9385 1333

### 3. Manually locating your files

Click on **File** and navigate to **Open**



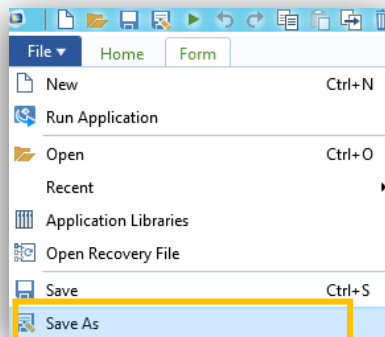
- If prompted, select Permit all access when the Citrix Receiver- Security Warning appears.
- Select your Local **C:drive** through the **This PC** menu.



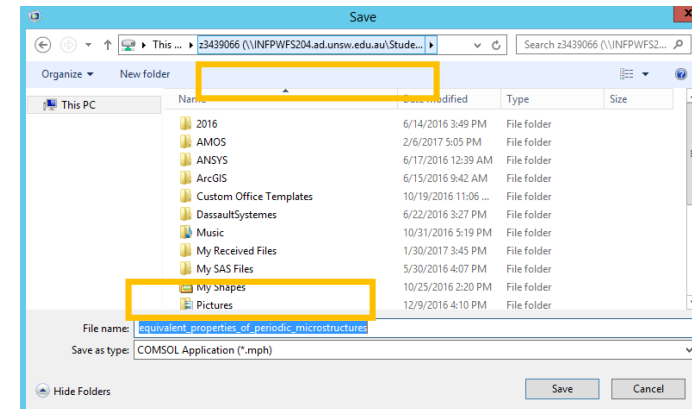
- Once you find your data files in the **C:drive** double click on them OR click **Open** and COMSOL will open your data files.

### 4. Saving your data set

- To save either the **Data Output** or the **Data Set** click on **File** followed by **Save As**.



- From the dropdown menu select the **Cloud H:drive** and then select the **Save** option. Please ensure you do not save to the **Temporary Storage D Drive** as your data will be lost if you do so.



### 5. Printing in Comsol Multiphysics

Please ask your tutor regarding the proper use of COMSOL's 3D printing feature to print 3D models of your work.